

WELCOME TO

Mayfield Woods

Middle School



WORKING TOGETHER TO ENSURE A SUCCESSFUL TRANSITION TO MIDDLE SCHOOL

**Building a Strong Foundation for
High School and Beyond**

**Mayfield Woods Middle School
January 12, 2017**

Welcome

Melissa Shindel
Principal



Welcome

Jenn Richardson
PTA 2nd Vice President and
PTAC Representative




Many ways to get involved:

- Join the Board
- Chair a Committee
- Volunteer to help




MAYFIELD WOODS PTA

NEWS SUPPORT / JOIN US CONTACT US MUSIC BOOSTERS



Welcome BULLDOGS!

 **\$25 for 25**


MWMS is celebrating its 25th anniversary! Show your Bulldog Pride by donating \$25 to the PTA! That's only \$1 a year! This is the PTA's most important fundraiser of the year. EVERY DONATION COUNTS and EVERY STUDENT BENEFITS!

[Donate Today!](#)

MWMS Teacher/Staff Gift Guide

Want to show your appreciation for a teacher or staff member but you have no idea what to give them? MWMS PTA is working with MWMS to create a *Teacher/Staff Gift Guide**. Take the guess-work out of Holiday and End-of-Year gift giving. Simply consult the Gift Guide and you can't go wrong!

*Gifts for teachers & staff are strictly optional. Please do not



What We Do ...

- Book Fairs
- Candygrams
- Cultural Arts Assemblies
- Event Concessions
- Fall Musical & Spring Play
- Hospitality/Staff Appreciation
- School Dances
- School Store
- School Supply Kits
- Spirit Gear
- 8th Grade Graduation Celebration
- ... and more!

**Everyone Wins
When You Join the PTA!**

Agenda

- **Our School & Staff**
- **Goals, Vision & Research**
- **Our schedule:**
 - **Overview**
 - **Specifics**
 - **Samples**
- **Academic Behaviors**
- **Resources**
- **Q & A**
- **Tour**



Our School

- 3 grades: 6, 7, 8
- 689 students
- 95 staff members
- Mascot: Bulldogs!
- Colors: Black and Red
- School opened in 1991
- PBIS School

 Green School
 PBIS Maryland Gold
 Healthy Howard School – Silver

The Mayfield Woods Middle School

BARK



Be Safe



Act Responsibly



Respect Self and Others



Keep Focused

Meet the Staff:

Front Office and Administration



Meet the Staff:

Student Services



Meet the Staff:

8th Grade



Meet the Staff:

7th Grade



Meet the Staff:

Related Arts



Meet the Staff:

Special Education



Meet the Staff:

Specialists



Meet the Staff:

6th Grade





**WORKING TOGETHER TO PROVIDE A
WORLD CLASS EDUCATION**

Vision 2018:

The Promise of Preparation

Vision

Every student is **inspired** to learn and **empowered** to excel.

Mission

We cultivate a **vibrant** learning community that prepares students to **thrive** in a **dynamic** world.

The research says...

- The level of academic achievement that students attain by eighth grade has a larger impact on their college and career readiness **MORE** than anything that happens academically in high school.
- The earlier a student develops important academically related behaviors, the more likely these behaviors are to become habits.
- Middle school is a defining point for students in the college and career readiness process.



Source: The Forgotten Middle: Ensuring that All Students Are On Target For College and Career Readiness Before High School, ACT, 2008.

**21st
Century
Skills**

- Life and Career Skills
- Learning and Innovation Skills
- Information Media and Technology Skills

**Student
Behaviors**

**High
School
Readiness**

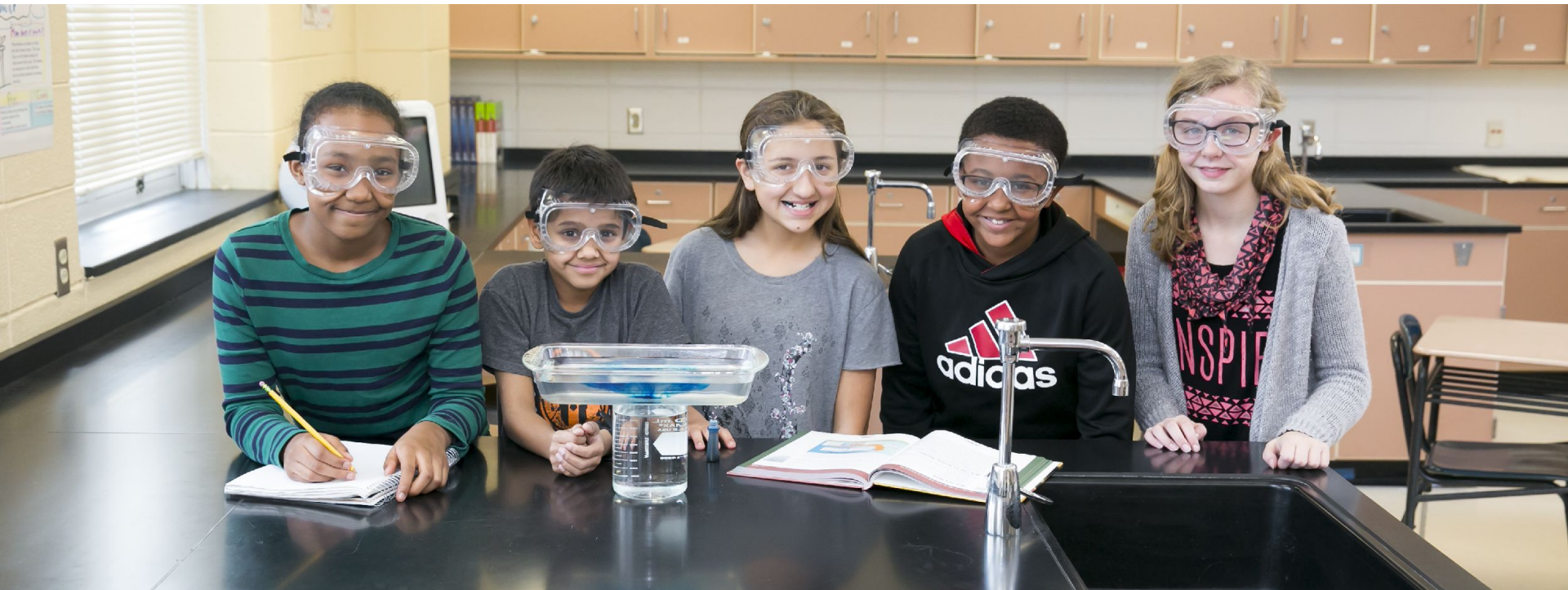
**College
and
Career
Readiness**



The Middle School Schedule



**All students are
enrolled in seven
50-minute classes every day.**



**All students receive daily instruction aligned
to Maryland's College and Career-Ready
Standards in:**

English

Mathematics

Social Studies

Science



In addition, Maryland regulations require
all students take these each year:

- **Health Education**
- **Physical Education**
- **Fine Arts** (General Music, Visual Arts, and/or
Performing Arts)



...and these at least
1 time while in middle school:

- Course with **career-education** content
(6th grade Careers)
- Course with **financial literacy** content
(7th or 8th grade FACS)



Music Performance Ensemble Options

Band – Chorus – Orchestra



- Year-long classes
- Includes a daily large ensemble rehearsal and a weekly small sectional that are scheduled on a rotational basis
- Ensembles are ability-based
- Music teachers will be in contact with elementary programs to schedule meetings and auditions

World Language Options



French – Spanish

- Students may begin French or Spanish in 7th grade
- Year-long classes
- HS Level 1 course spread over 2 years
- Students receive high school credit for completing MS world language courses

Additional Courses



- **Family and Consumer Science**
- **Technology Education**
- **Reading and/or Math Intervention**
- **Innovation & Inquiry Reading Modules**
- **GT Research (6th grade only)**

Lunch



How Does it All Fit Together?



Mayfield Woods MS Schedule

TIME	SEMESTER 1	SEMESTER 2
7:52	Students enter MWMS	
8:00 - 8:08	Homeroom	
8:10 - 9:00	Period 1	
9:02 - 9:52	Period 2	
9:54 -10:44	Period 3	
10:46 - 11:16	Lunch	
11:18 - 12:08	Period 4	
12:10 - 1:00	Period 5	
1:02- 1:52	Period 6 (A) / (B)	Period 6 (A) / (B)
1:54 - 2:45	Period 7 (A) / (B)	Period 7 (A) / (B)

KEY TIMES

- 7:52 a.m.: Doors open
- 8:00 a.m.: Students must be in homeroom
- 10:46 a.m.: 6th grade lunch
- 2:45 p.m.: Dismissal

Mayfield Woods MS Schedule

INTRODUCING...

“THE HANDS”



Mayfield Woods MS Schedule

OVERVIEW:

- Every student has 7 fifty-minute classes each day



Mayfield Woods MS Schedule

OVERVIEW:

- **EVERY** student receives daily instruction in English Language Arts (*ELA*), mathematics, social studies and science



Mayfield Woods MS Schedule

OVERVIEW:

- Take away those 4 common classes, and each student has 3 classes left per day

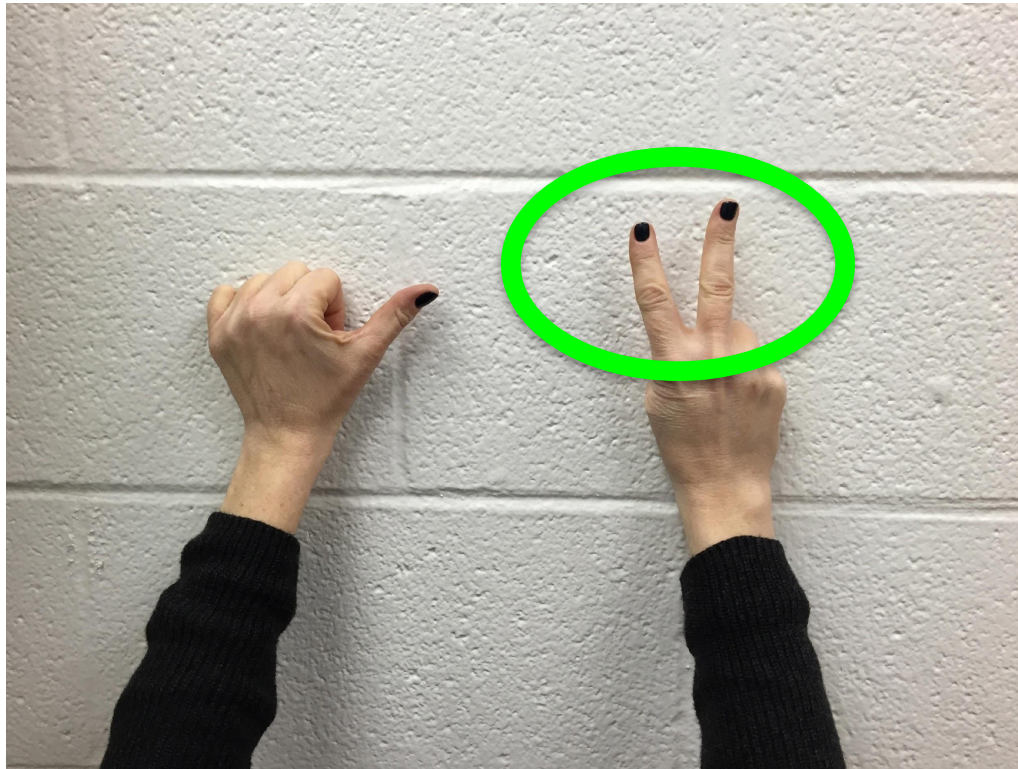


Mayfield Woods MS Schedule

OVERVIEW:

- Every student has 2 related arts classes per day:

- FACS
- Art
- PE
- Health
- Careers



- General Music
- Chorus
- GT Research
(6th grade only)
- Math
intervention
seminar

Mayfield Woods MS Schedule

OVERVIEW:

- Take away those 2 related arts classes, and each student has 1 class left per day



Mayfield Woods MS Schedule

INTRODUCING...

“THE THUMB”



Mayfield Woods MS Schedule

OVERVIEW – “THE THUMB”

- I & I Reading Modules (full year)
- Instructional intervention seminars for students performing below grade-level in reading
 - Reading intervention seminar
 - ELL support
- Band
- Orchestra



**1 “thumb” class
is required.**

**Students MUST have 1 thumb class,
but they can only have 1.**

Mayfield Woods MS Schedule



“THE THUMB”

Students either get 1 YELLOW or they default to the GREEN

Mayfield Woods MS Schedule

SAMPLE SCHEDULES



Mayfield Woods MS Schedule

6th Grade Schedule

TIME	SEMESTER 1	SEMESTER 2
8:00 - 8:08	Homeroom	
8:10 - 9:00	Period 1	
9:02 - 9:52	Period 2	
9:54 -10:44	Period 3	
10:46 - 11:16	Lunch	
11:18 - 12:08	Period 4	
12:10 - 1:00	Period 5	
1:02- 1:52	Period 6 (A) / (B)	Period 6 (A) / (B) ← RA
1:54 - 2:45	Period 7 (A) / (B)	Period 7 (A) / (B) ← RA

Sample 6th Grade Schedules

6th Grade Schedule

No performing arts, GT research or math intervention seminar

TIME	SEMESTER 1	SEMESTER 2
8:00 - 8:08	Homeroom	
8:10 - 9:00	ELA	
9:02 - 9:52	Social Studies	
9:54 -10:44	Math	
10:46 - 11:16	Lunch	
11:18 - 12:08	Science	
12:10 - 1:00	I & I Modules	
1:02- 1:52	(A) PE (B) Health	(A) PE (B) Career
1:54 - 2:45	(A) Art (B) FACS	(A) Music (B) Tech Ed

Sample 6th Grade Schedules

6th Grade Schedule

No performing arts, GT research or math intervention seminar

TIME	SEMESTER 1	SEMESTER 2
8:00 - 8:08	Homeroom	
8:10 - 9:00	ELA	
9:02 - 9:52	Social Studies	
9:54 - 10:44	Math	
10:46 - 11:16	Lunch	
11:18 - 12:08	Science	
12:10 - 1:00	I & I Modules	
1:02- 1:52	(A) PE (B) Health	(A) PE (B) Career
1:54 - 2:45	(A) Art (B) FACS	(A) Music (B) Tech Ed

PE/Health COMAR requirements

Sample 6th Grade Schedules

6th Grade Schedule

No performing arts, GT research or math intervention seminar

TIME	SEMESTER 1	SEMESTER 2
8:00 - 8:08	Homeroom	
8:10 - 9:00	ELA	
9:02 - 9:52	Social Studies	
9:54 -10:44	Math	
10:46 - 11:16	Lunch	
11:18 - 12:08	Science	
12:10 - 1:00	I & I Modules	
1:02- 1:52	(A) PE (B) Health	(A) PE (B) Career
1:54 - 2:45	(A) Art (B) FACS	(A) Music (B) Tech Ed

Fine Arts & Career COMAR requirements

Sample 6th Grade Schedules

6th Grade Schedule

Band or **Orchestra**, but no GT research or math intervention seminars

TIME	SEMESTER 1	SEMESTER 2
8:00 - 8:08	Homeroom	
8:10 - 9:00	ELA	
9:02 - 9:52	Social Studies	
9:54 -10:44	Math	
10:46 - 11:16	Lunch	
11:18 - 12:08	Science	
12:10 - 1:00	Band or Orchestra	
1:02- 1:52	(A) PE (B) Health	(A) PE (B) Career
1:54 - 2:45	(A) Art (B) FACS	(A) Music (B) Tech Ed

Sample 6th Grade Schedules

6th Grade Schedule

Band or **Orchestra** and **GT research**, but no math intervention seminar

TIME	SEMESTER 1	SEMESTER 2
8:00 - 8:08	Homeroom	
8:10 - 9:00	ELA	
9:02 - 9:52	Social Studies	
9:54 -10:44	Math	
10:46 - 11:16	Lunch	
11:18 - 12:08	Science	
12:10 - 1:00	Band or Orchestra	
1:02- 1:52	(A) PE (B) Music	(A) PE (B) Health
1:54 - 2:45	(A) Tech Ed (B) GT Research	(A) Career (B) GT Research

Sample 6th Grade Schedules

6th Grade Schedule

Band or **orchestra** and **math intervention seminar**, but no GT research

TIME	SEMESTER 1	SEMESTER 2
8:00 - 8:08	Homeroom	
8:10 - 9:00	ELA	
9:02 - 9:52	Social Studies	
9:54 -10:44	Math	
10:46 - 11:16	Lunch	
11:18 - 12:08	Science	
12:10 - 1:00	Band or Orchestra	
1:02- 1:52	(A) PE (B) Health	(A) PE (B) Career
1:54 - 2:45	Math Intervention Seminar	Math Intervention Seminar

There are
Endless
Possibilities.....

Mayfield Woods MS Schedule

Bulldog Brain Time #MayfieldBBT

1 day each week

27 minute block

Modified schedule

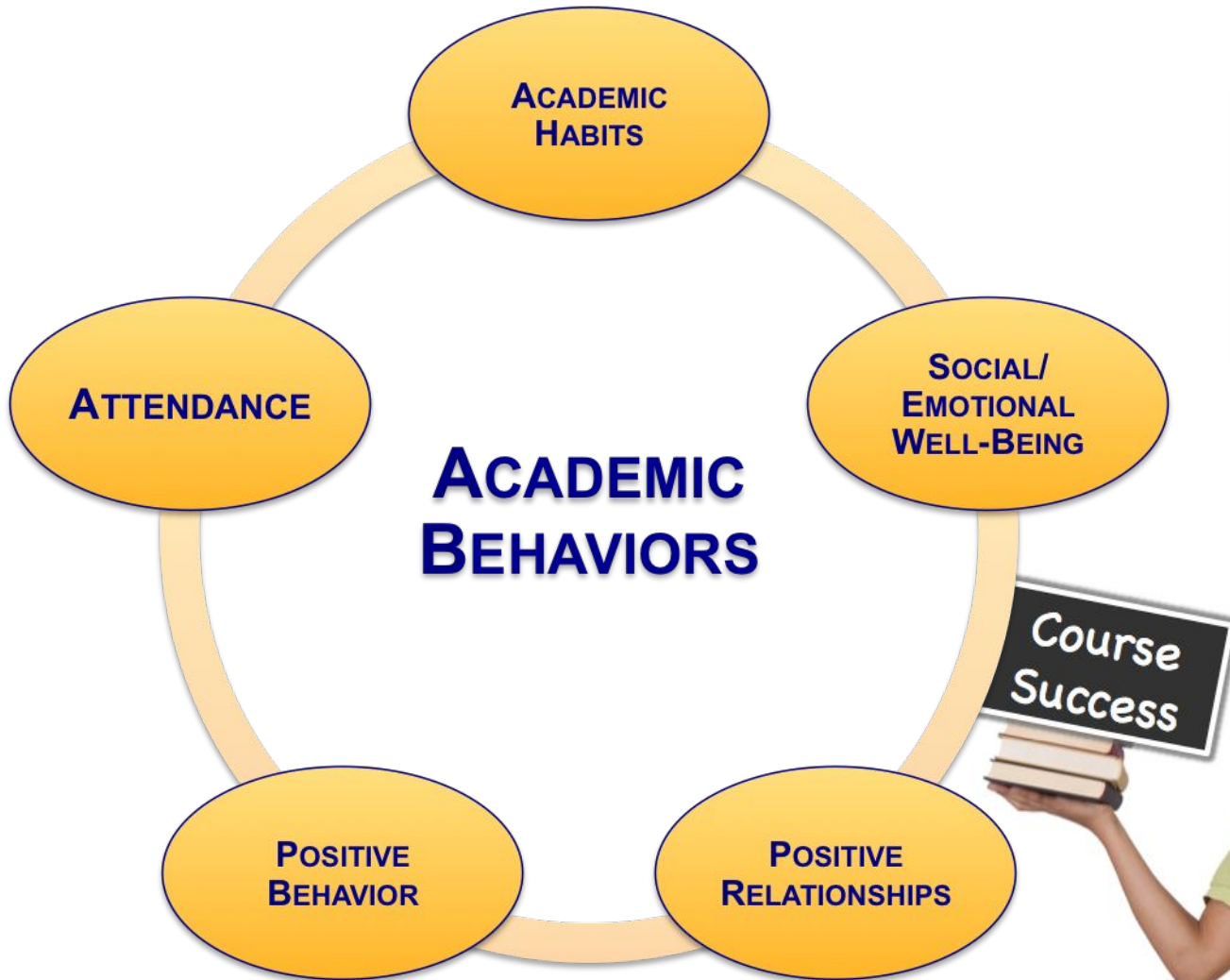


Student Services:

Ms. Bradley and Ms. Garroway



Supporting Academic Behaviors



Roots and Wings

Time of Change

- Physical
- Brain Development
- Hormonal
- Social Development

What to Expect

- Forgetfulness
- Irritability
- Power plays
- Friendship Issues
- Ups and Downs



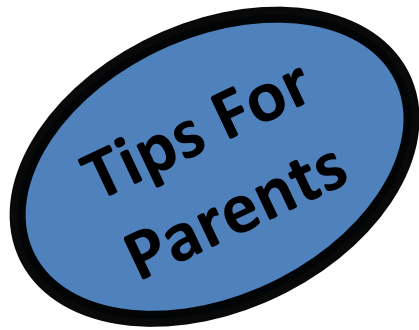
Finding the Right Balance Between

- Course Placements
- Rigor
- Personal Interests
- Student Success



Motivation and behavior,
combined, have
more impact
on a student's **readiness**
than academic achievement.

LearnED
by PEARSON



Supporting Positive Student Behaviors

- Ensure that your child has the materials and place to study at home
- Set a regular time for homework
- Encourage your child to be responsible for chores and homework
- Provide your child with a range of experiences to allow him/her to identify areas of strength
- Talk to your child

Outdoor Education:

October 11-13, 2017



Resources



Resources

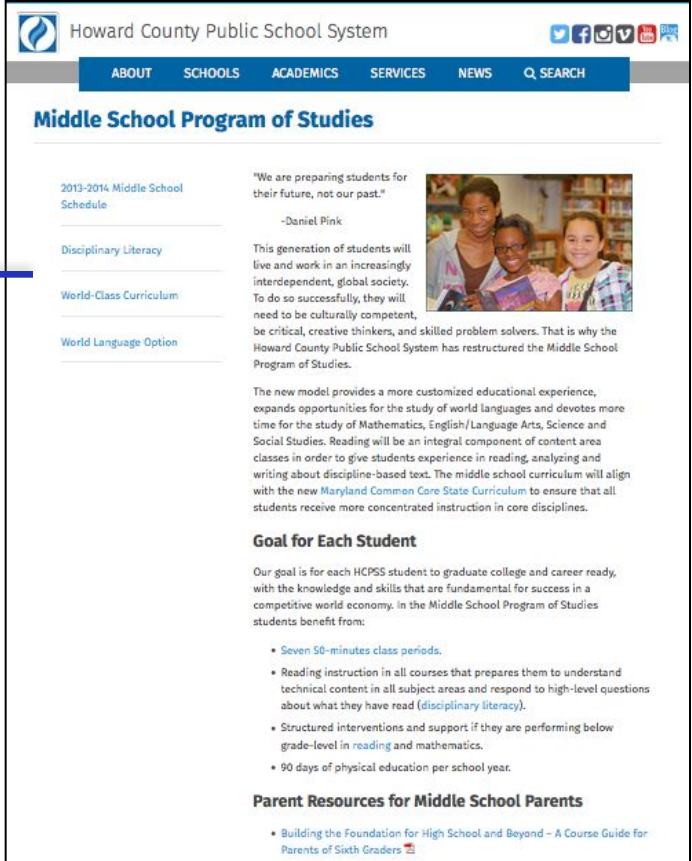
http://www.hcpss.org/academics/ms_program/

2013-2014 Middle School
Schedule

Disciplinary Literacy

World-Class Curriculum

World Language Option



Howard County Public School System

ABOUT SCHOOLS ACADEMICS SERVICES NEWS Q SEARCH

Middle School Program of Studies

2013-2014 Middle School Schedule

Disciplinary Literacy

World-Class Curriculum

World Language Option

"We are preparing students for their future, not our past."
-Daniel Pink

This generation of students will live and work in an increasingly interdependent, global society. To do so successfully, they will need to be culturally competent, be critical, creative thinkers, and skilled problem solvers. That is why the Howard County Public School System has restructured the Middle School Program of Studies.

The new model provides a more customized educational experience, expands opportunities for the study of world languages and devotes more time for the study of Mathematics, English/Language Arts, Science and Social Studies. Reading will be an integral component of content area classes in order to give students experience in reading, analyzing and writing about discipline-based text. The middle school curriculum will align with the new *Maryland Common Core State Curriculum* to ensure that all students receive more concentrated instruction in core disciplines.

Goal for Each Student

Our goal is for each HCPSS student to graduate college and career ready, with the knowledge and skills that are fundamental for success in a competitive world economy. In the Middle School Program of Studies students benefit from:

- Seven 50-minute class periods.
- Reading instruction in all courses that prepares them to understand technical content in all subject areas and respond to high-level questions about what they have read (*disciplinary literacy*).
- Structured interventions and support if they are performing below grade-level in reading and mathematics.
- 90 days of physical education per school year.

Parent Resources for Middle School Parents

- [Building the Foundation for High School and Beyond - A Course Guide for Parents of Sixth Graders](#)

Resources



Howard County Public School System

 [Search](#)[About](#)[Schools](#)[Academics](#)[Services](#)[News](#)[Contact](#)

Fulfilling the Promise of Preparation

HCPSS NEWS



Superintendent Presents Proposed Operating Budget for 2017-2018 Academic Year

Superintendent Renee A. Foose unveiled the Howard County Public School System's FY2018 proposed budget to the Board of Education on Tuesday, Jan. 10 during a special presentation.

[Learn more →](#)



Joan Ogaitis, Occupational Therapy Program Head, Special Education

Ogaitis works to remove learning barriers for students, so they can succeed in the classroom and ultimately in life.

[Read her story →](#)



Road to Kindergarten Workshops

Parents of incoming kindergarteners are invited to an information session about kindergarten in Howard County. Sessions will be held January 25, 26 and 30.

[Learn more →](#)

<http://www.hcpss.org/>

Resources

ARE YOU LOOKING FOR...

Services & Information

School Calendar

Stay up-to-date on system-wide events and closings.

HCPSS Connect

Access your student's information and classroom instructional tools

Enrollment and Registration

How to enroll your child in the school system

Food Services

View menus, meal prices, and make online payments

HCPSS Forms

Health, medication, athletic, and application forms

HCPSS Mobile Apps

Aggregate district news and events, check menus, view grades in Canvas

School & Bus Locator

Find your child's school and view bus pickup times

Staff Hub

The daily launchpad for HCPSS employees and departments

Trending Topics

FY 2018 Proposed Budget

View the Superintendent's Proposed Budget for Fiscal Year 2018.

Emergency / Weather Closings

Stay up-to-date on weather-related school closings.

School Start and Dismissal Times

Compare models and provide feedback to the committee.

2017-2018 Academic Calendar

Board of Education is reviewing a new proposal for the 2017-2018 Academic Calendar.

WATCH NOW ON HCPSS TV



HCPSS Insight: School Start and Dismissal Times Q & A

Better understand the work

<http://www.hcpss.org/>

[Home](#)[About ▼](#)[News](#)[Calendar](#)[Our Staff](#)[Services](#)[Get Involved](#)[HCPSS Resources ▼](#)[School Resources](#)

IMPORTANT NEWS & UPCOMING EVENTS

MWMS Newsletter - 1/6/17

Read the MWMS Newsletter
for January 6, 2017.

Requesting Make-up Work due to Excused Absences

Wednesday, January 4, 2017 (All day)

Weather Guidelines/Recess

Monday, December 12, 2016 (All day)

Do you know about the HCPSS Family Mathematics Support Center?

Attention 8th Grade Parents: High School Information!

Sunday, December 25, 2016 - 9:00am

Attention 6th Grade Parents: Health Form Updates

Wednesday, January 4, 2017 (All day)

Resources



Howard County Public School System

Search

About

Schools

Academics

Services

News

Contact

PARENT ACCESS TO STUDENT INFORMATION & CLASSWORK



HCPSS Connect

HCPSS Connect provides access to a variety of student information and classroom instructional tools offering personalized communication and timely, relevant, and easily accessible information relating to your student.

HCPSS CONNECT LOGIN

Trouble logging in? [View instructions on resetting passwords.](#) If you continue to have issues, please contact your child's school.

Log in to begin monitoring your child's homework assignments, check schedules and attendance records, view report cards, and more.



Setting Canvas Notification Preferences

11/09/2016

HCPSS has recently discovered some parents were not receiving email notifications from Canvas course "Announcements" or the "Conversations/Inbox" messaging tool. Notification preferences for all parents/observers have been set so that the "Announcements" and "Conversations" are set to "Notify me right away." All other notification settings will remain in their current state and can be changed by the parent/observer at any time. [Learn more about setting Canvas notification preferences.](#)

New Parent Change Password Functionality

10/24/2016

HCPSS has implemented new Parent Change Password

<http://www.hcpss.org/connect>

Resources

DATE	ACTIVITY
As Soon as Possible!	Follow us on Twitter! https://twitter.com/hcpss_MWMS <i>(You don't have to be on Twitter to visit our page!)</i>
As Soon as Possible!	Follow the principal on Instagram! https://www.instagram.com/principal_shindel/ <i>(You don't have to be on Twitter to visit our page!)</i>
May 13	Mayfest!
May 18	A list of your child's courses will be sent home with your child <i>(This is not your child's schedule)</i>
May 18	"Mayfield 25" Family Picnic Celebration, 5:00 p.m. – 7:00 p.m.
May 18	GT Enrichment Fair, 7:00 p.m. - 9:00 p.m.
May 23	5 th Graders visit Mayfield Woods!
August 2017, TBD	6 th Grade Orientation
TBD	Outdoor Ed Information Meeting, 6:00 p.m.
TBD	Back to School Night, 5:45 p.m.
October 11-13	Outdoor Ed!

Tours and Questions

To be respectful of your time and your preferences, we will:

- **Begin school tours for those of you who are interested**
- **Once the tours exit, we will stay back and answer questions**

Tours and Questions

To be respectful of your time and your preferences:

- Please line up along the side wall to your left**
- Ms. Garroway and Ms. Bradley will assist students in forming groups for tours**
- Our super awesome students will be your tour guides**
- Once the tours exit, we will continue answering questions**

THANK YOU!
WE LOOK FORWARD TO
SEEING YOU AGAIN SOON!

